

compatibile - compatible "modulo" - "unico" - "modulo-push" e "push-pad"

GRUPPO CILINDRO MANIGLIA IN FOLLE

In lega pressofusa verniciata

Maniglia in folle, unica versione per modalità standard e versione condominio. In modalità condominio la chiave rimane in posizione sino alla sua estrazione

OUTSIDE ACCESS DEVICE FREE MOVEMENT

Painted pressure die-cast alloy

Free-movement handle, one version for both standard and key retaining. The key retaining version only allows key to be removed when in locked position

MODULE EXTERIEUR DÉBRAYABLE

En alliage moulé sous pression et laqué

Poignée débrayable pour modalité standard et clé prisonnière. En modalité clé prisonnière, la clé maintient sa position jusqu'à son extraction

GRUPO CILINDRO MANIJA EN PUNTO NEUTRO

De aleación fundida barnizada

Manija en punto neutro, única versión para modalidad estándar y versión condominio. En modalidad condominio la llave permanece en posición hasta su extracción

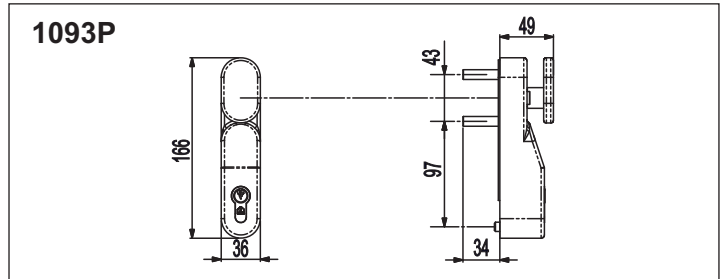
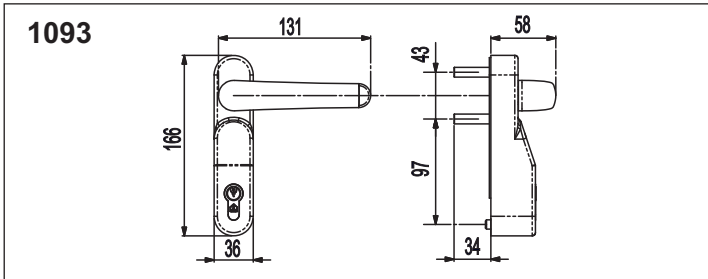


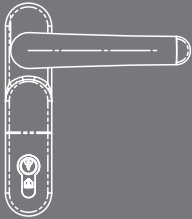
confezione - boxing: 1 pz.

imballo - packing: 8 pz.

Finitura a richiesta - Special finishes on request
Finition on demande - Acabado a pedido:

O = Ottonato - Polished Brass - Finition laiton - Bronceado



Cod.Art.	Colore - Colour	
1093	Nero - Black - Noir Negro RAL 9005	
1093/G	RAL 7040 Grigio - Grey Gris - Gris	
1093/G6	RAL 9006	
1093/B	Bianco - White - Blanc Blanco RAL 9016	
1093/A	Verniciatura effetto acciaio - Steel finish special painting - Laquage spécial finition acier - Barnizado efecto acero	
1093/X	Cromo satinato - Satin chrome Chrome satinée - Cromo satinado	

Cod.Art.	Colore - Colour	
1093P	Nero - Black - Noir Negro RAL 9005	
1093P/G	RAL 7040 Grigio - Grey Gris - Gris	
1093P/G6	RAL 9006	
1093P/B	Bianco - White - Blanc Blanco RAL 9016	
1093P/A	Verniciatura effetto acciaio - Steel finish special painting - Laquage spécial finition acier - Barnizado efecto acero	
1093P/X	Cromo satinato - Satin chrome Chrome satinée - Cromo satinado	

IN ALTERNATIVA SI POSSONO UTILIZZARE GLI ART. 1090-1092-1090P-1092P
THE ITEMS 1090-1092-1090P-1092P CAN BE USED AS AN ALTERNATIVE
EN ALTERNATIVE, ON PEUT UTILISER LES ART. 1090-1092-1090P-1092P
UTILIZABLE ART. 1090-1092-1090P-1092P